

DEVELOPING A PICU CARE PATHWAY

DR FAISIL SETHI
 CONSULTANT PSYCHIATRIST
 NAPICU Director of Scientific Programmes

CONTENT

- WHAT IS A CARE PATHWAY?
- DEVELOPING A CARE PATHWAY
- STRATEGIC INFLUENCE AT A NATIONAL LEVEL
- LOCAL INTERFACES
- PATIENT TYPES AND PATHWAYS
- STATEMENT OF VISION

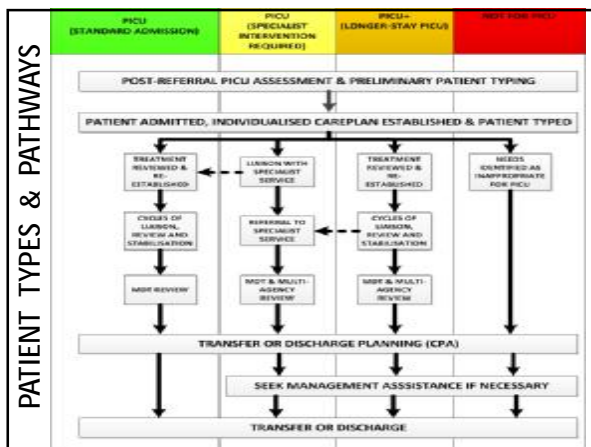
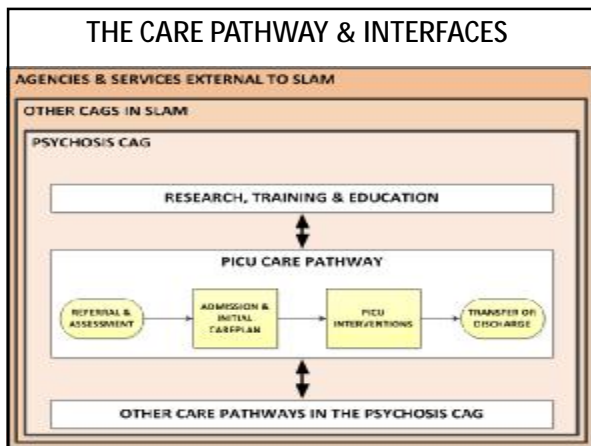
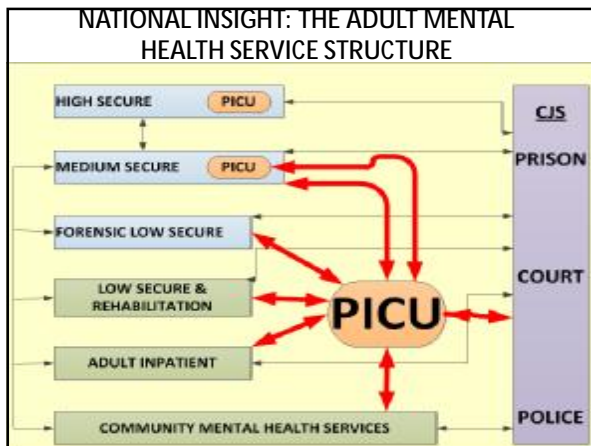
WHAT IS A CARE PATHWAY?

A care pathway is a tool and a concept that embeds guidelines, protocols, and locally agreed evidence-based, patient-centred, best practice into everyday use for the individual patient.

*(NHS Protocols and Care Pathways Library)
 (SLAM Framework for CAG Care Pathway Development 2009)*

THINKING ABOUT PATHWAY DEVELOPMENT





- ### CHALLENGES ARE OPPORTUNITIES
- NATIONAL GUIDANCE & STRATEGY
 - CONVENTIONAL PICU INTERFACES WITHIN THE CAG MODEL
 - OVER-INCLUSIVE PICU PHILOSOPHY IN THE PSYCHOSIS CAG
 - PATIENT TYPING LEADING TO DISTINCT STREAMS
 - **PRIMARY OBJECTIVE: HIGH QUALITY PATIENT CARE**

STATEMENT OF VISION

THE PICU CARE PATHWAY IS A DYNAMIC INSTRUMENT WHICH IS DEVELOPED BY ALL THE STAKEHOLDERS IN LINE WITH THE BEST AVAILABLE EVIDENCE.

IT HAS THE CORE ATTRIBUTE OF PROVIDING A PERSON-FOCUSSED SERVICE FOR PATIENTS IN AN ACUTELY DISTURBED PHASE OF A SERIOUS MENTAL DISORDER.

IT DEFINES STANDARDS AND PROVIDES QUANTITATIVE OUTCOMES.

IT EVOLVES IN RESPONSE TO VARIANCE, RESEARCH AND CHANGES IN LOCAL AND NATIONAL PRIORITIES.

IT PROMOTES THE GOAL OF CLINICAL EXCELLENCE, RESEARCH EXCELLENCE AND TRAINING EXCELLENCE IN THE AREA OF PSYCHIATRIC INTENSIVE CARE.

SELECTED SOURCES:

In researching the topic of PICU Care Pathways, whilst preparing for this presentation, I utilised the following sources:

de Luc K. *Developing Care Pathways: The handbook*. National Pathways Association. 2001.

de Luc K. *Developing Care Pathways: The toolkit*. National Pathways Association. 2001.

Department of Health. *Mental Health Policy Implementation Guide. National Minimum Standards for General Adult Services in Psychiatric Intensive Care Units (PICU) and Low Secure Environments*. DOH 2002.

Evans-Lacko S E, Jarrett M, McCrone P et al. *Editorial: Clinical Pathways in Psychiatry*. *The British Journal of Psychiatry* (2008) 193, p 4-5.

Hall J, Howard D. *Integrated Care Pathways in Mental Health*. Churchill Livingstone Elsevier. 2006.

SELECTED SOURCES CONT:

Kearney T, Dye S. *Commentary: Lean thinking and more: Development of patient needs types in psychiatric intensive care*. *Journal of Psychiatric Intensive Care*. Vol. 6. No. 1: p57-63.

NHS Institute for Innovation and Improvement. *Delivering Quality and Value; Focus on: Psychiatric Intensive Care Units (PICUs)*. 2008.

South London and Maudsley NHS Foundation Trust. *Framework for CAG Care Pathway Development*. November 2009.

Thorncroft G, Monk D. *Mental Health Clinical Care Pathway Group – Final Report*. NHS London January 2008.

Website of the European Pathway Association: www.e-p-a.org

Website for the NHS Institute for Innovation and Improvement. The Productive Ward Module Structure:
www.institute.nhs.uk/quality_and_value/productivity_series/the_productive_ward_module_structure.html