

The Future of Low Secure Services

Ged McCann

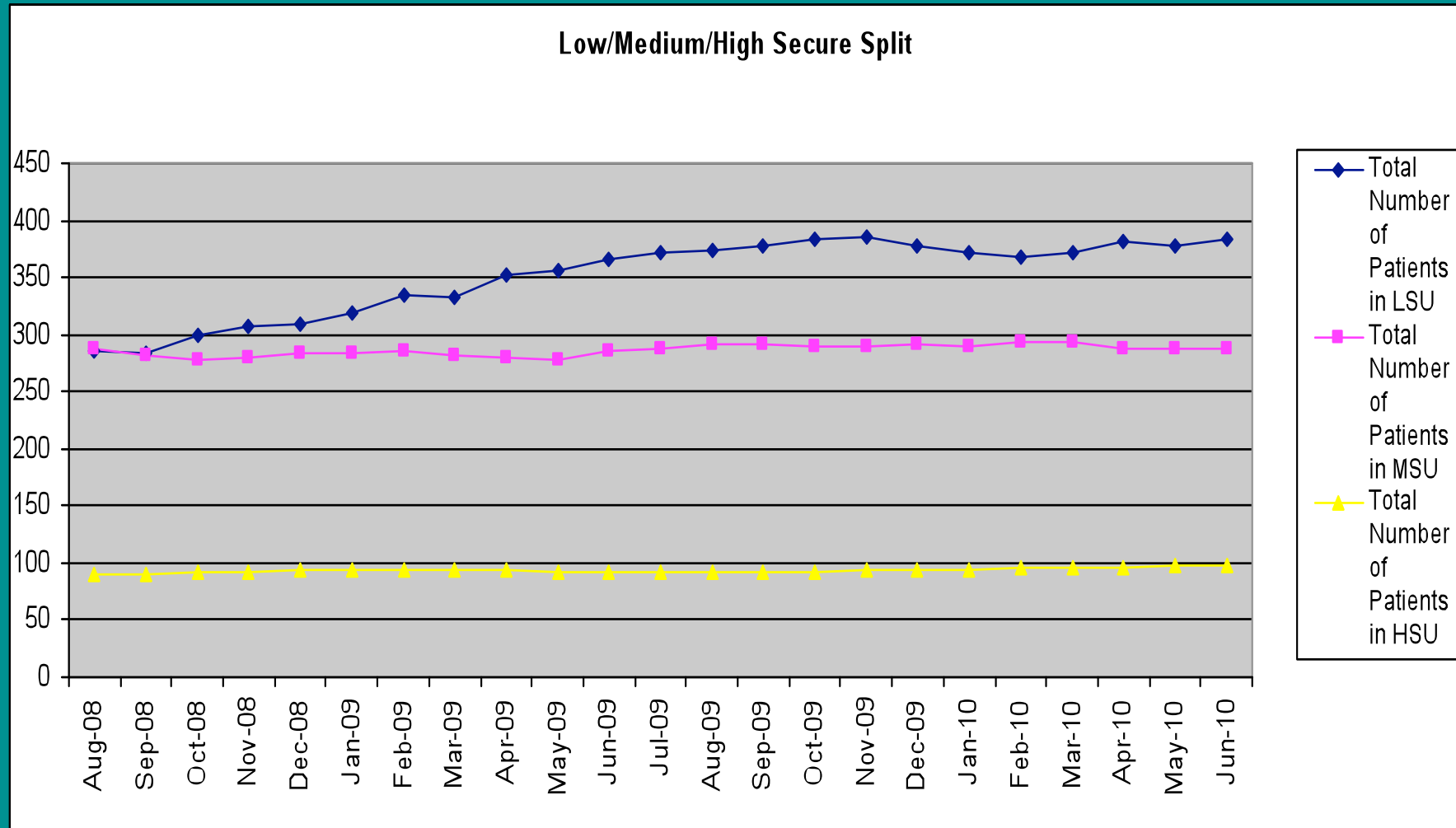
Associate Director of Commissioning
Chair of the

National Secure Commissioners Group

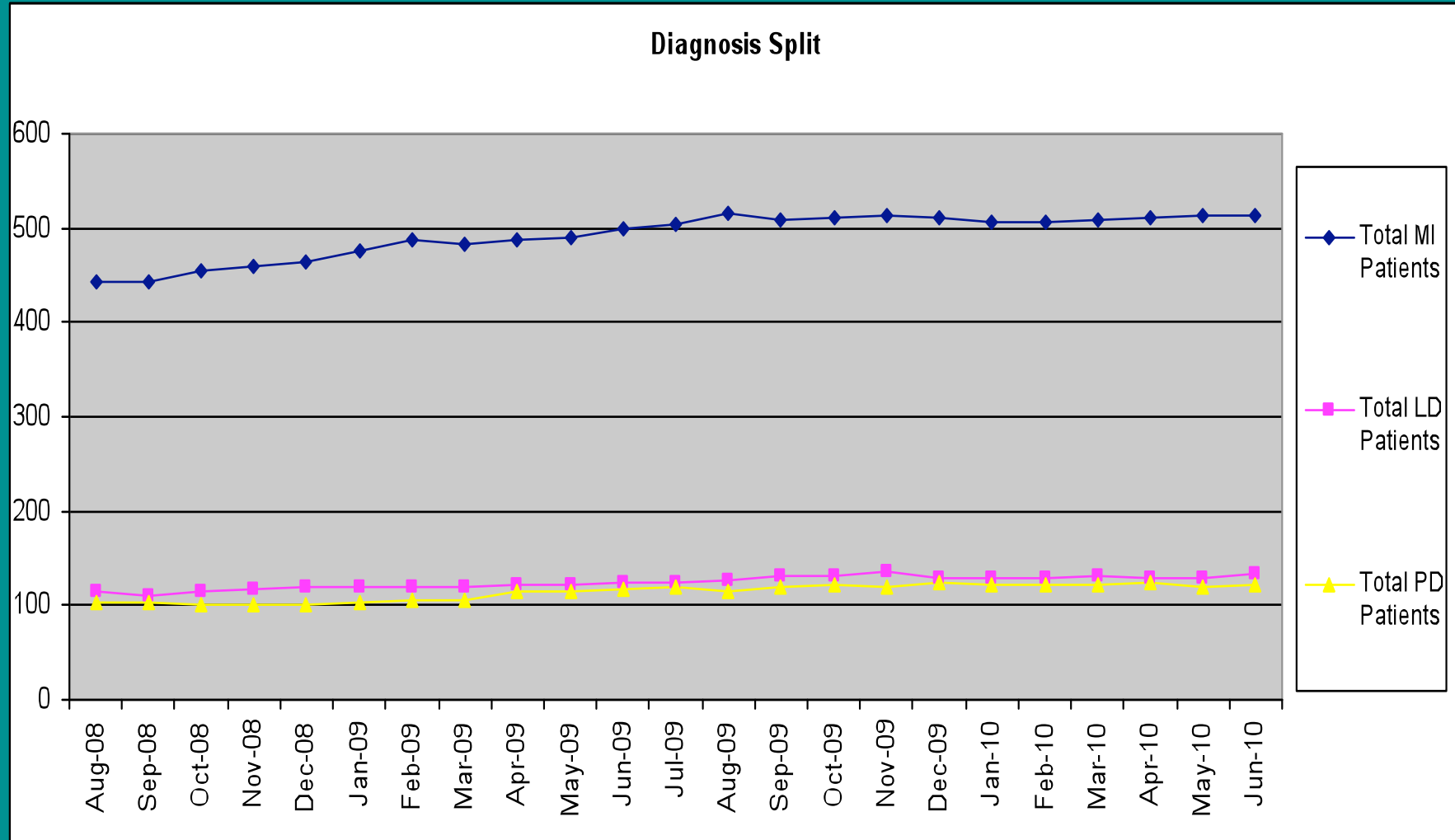
Context

- Medium Secure Services:
 - Number 64
 - 3000 patients
 - c. £500 M
- Low Secure Services
 - Number 135 approx
 - 5000 patients
 - c. £800 M
- 1% cost reduction = 13 M

Secure Trend



Secure Trend



QIPP

- Quality
 - Innovation
 - Productivity
 - Prevention
-
- Aims: cost and quality targets

QIPP Targets - Secure Care

- Reduce Length of Stay
- Reduce admissions
- Reduce Costs
- Improve Outcomes
- Increase Patient Responsibility

Development Programme Aims

1. Development of Model Pathway
2. Patient Portfolio
3. Decision Making Tool – Risk Matrix
4. New Payment Model
5. Best Practise Update/Development

Programme Management

- National QIPP Board - Kieran Murphy, NMHDU
- Secure QIPP Programme – Liz Allen
- £K Reserve
- National Secure Commissioners Group/
Specialist Commissioning Group Delivery

1. Model Pathway

Assessment and Engagement

Information Gathering from all agencies

Management of immediate risks

Understanding the person

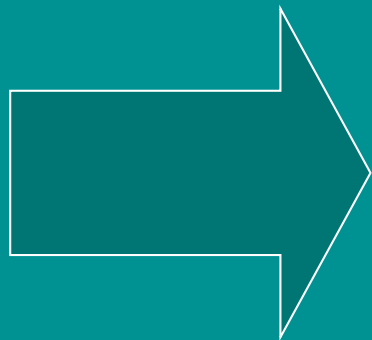
Explore needs and formulate joint actions for Recovery

- HONOS Secure

- HCR20

- GAS, CAN, BPRS, PANSS

- Recovery Planning Tool



Care and Recovery

Joint care plan (Patient Portfolio)

Psychosis treatment

Drug/alcohol misuse related therapy

Interpersonal violence

Offence related therapy

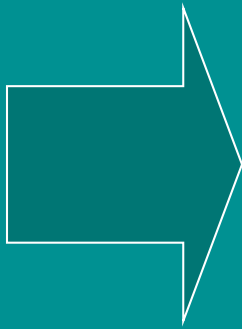
Personality issues related to risk

- Repeated HONOS Secure and HCR20

- Model of Human Occupation (MOHO) scores

- Recovery Planning Tool scores

1. Model Pathway



Rehabilitation and Discovery

Focus on functional skill development

Increasing independence and social integration

Structured use of S.17 leave, focus on skill development, social networking, and risk testing

Management of Transitional steps – medium to low, low to community

- Assessment of Motor and Process Skills (AMPS)
- Recovery Plan/Star scores
- Successful Transfer (Failure indicated by return within 9 months)

Key Themes:

- Outcome Based Approach/Standard Outcome Measures
- Timeframes
- LOS Targets

2. Patient Portfolio

Moving in

- Information – environment, security, orientation,
- Education – care and treatment, therapy
- Explanation – processes, timescales, care pathway
- Engagement and Motivation – activities, choice and personalisation

Moving on

- Treatment Goals and Outcomes
- Risk and Mental Health – responsibilities
- Tribunals, leave,
- Resources
- Relapse Factors, Coping Strategies, Planning

Moving out

- Explanation about the different stages of moving out
- Expected timeframes
- Roles and responsibilities
- Staying Out, Future Plan and Advanced Directives

3. Risk Decision Making Tool

- Standardised Gate Keeping Process
- Risk Matrix
 - Risk Assessment – escape, violence
 - Mental Health Assessment
 - Insight and Compliance
 - Level of Dependence
- Pathway Trigger

4. Payment System

- Underpinning payment system that rewards outcomes
- Speeds up pathway
- Encourages positive risk taking
- Pulls patients along pathway rather than pushes
- Cuts across NHS and IS, and whole pathway

5. Best Practise Guidance

- New Low Secure Guidance linked to medium secure best practise
- Web Based range of resources
- DH Policy needs to reflect QIPP programme and New Commissioning Arrangements

The Future

- Whole Pathway Partnerships
- Shared Health and CJS Outcomes
- Low Secure Services are a target for commissioners, a target for the Ministry of Justice, and a business target for FT's and IS Boards.....

.....We need to get them right

Ged McCann

Associate Director of Commissioning
Secure and Specialist Mental Health
Yorkshire and Humber

Ged.mccann@barnsleypct.nhs.uk